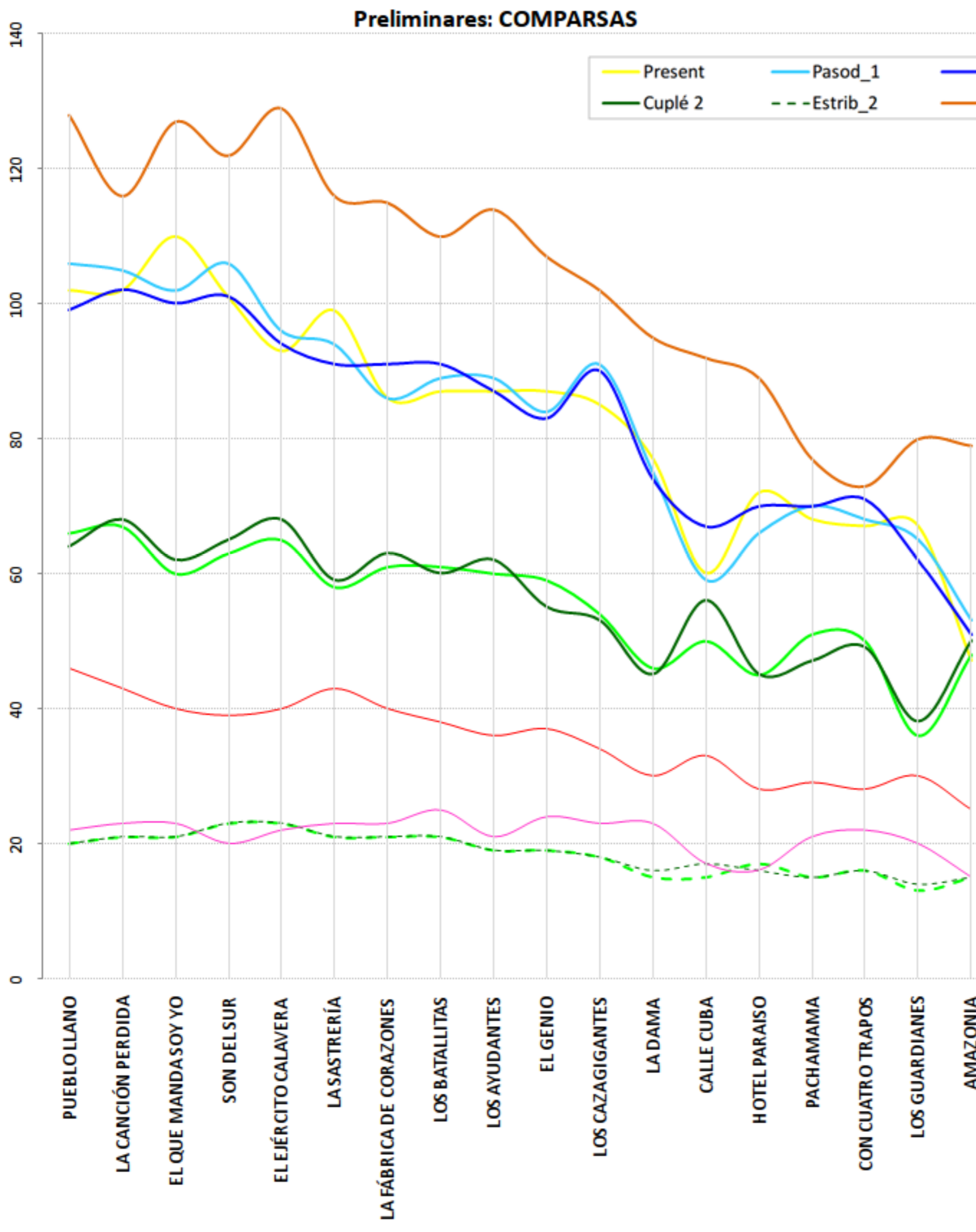
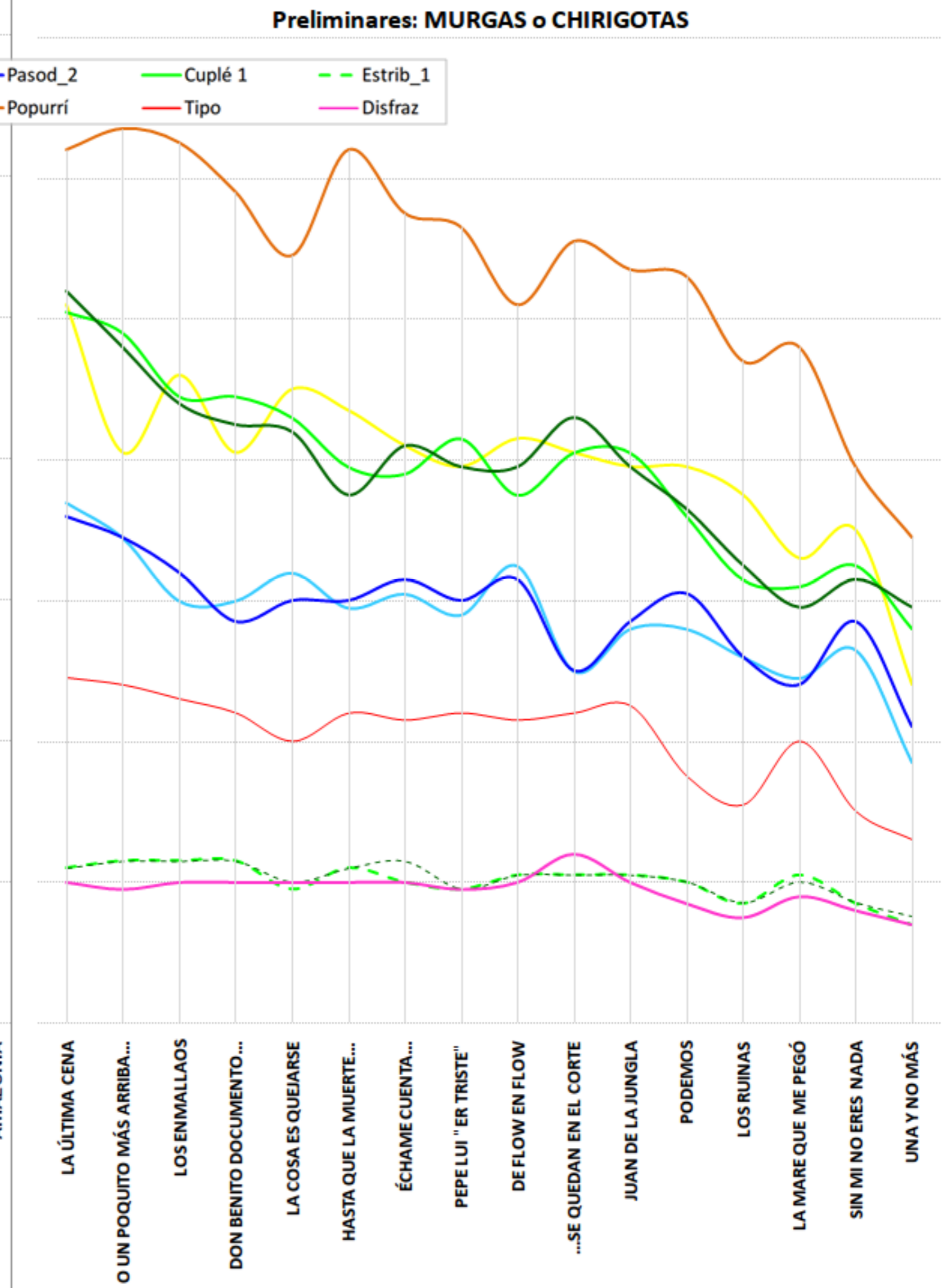




### Preliminares: COMPARSAS



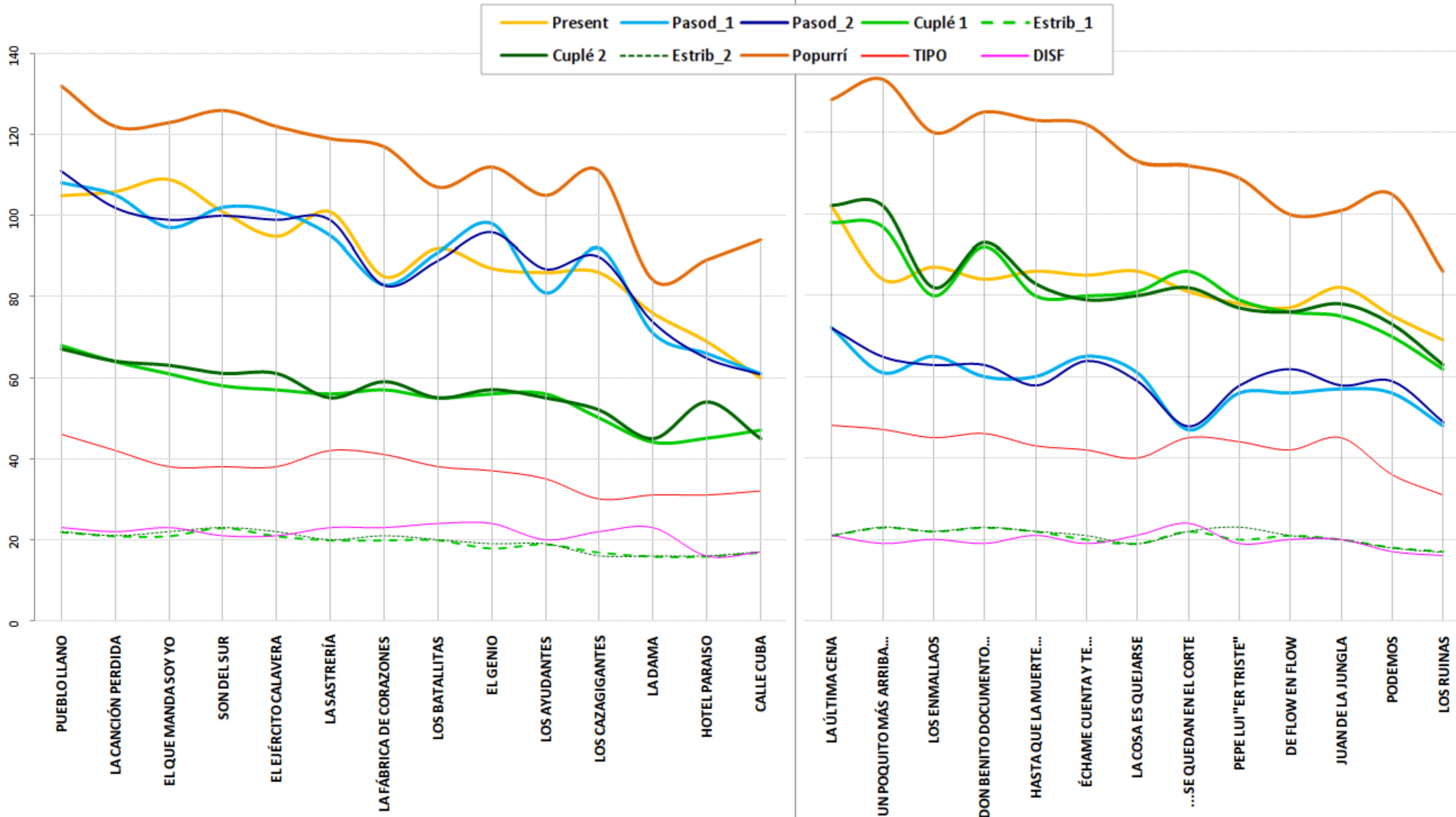
### Preliminares: MURGAS o CHIRIGOTAS





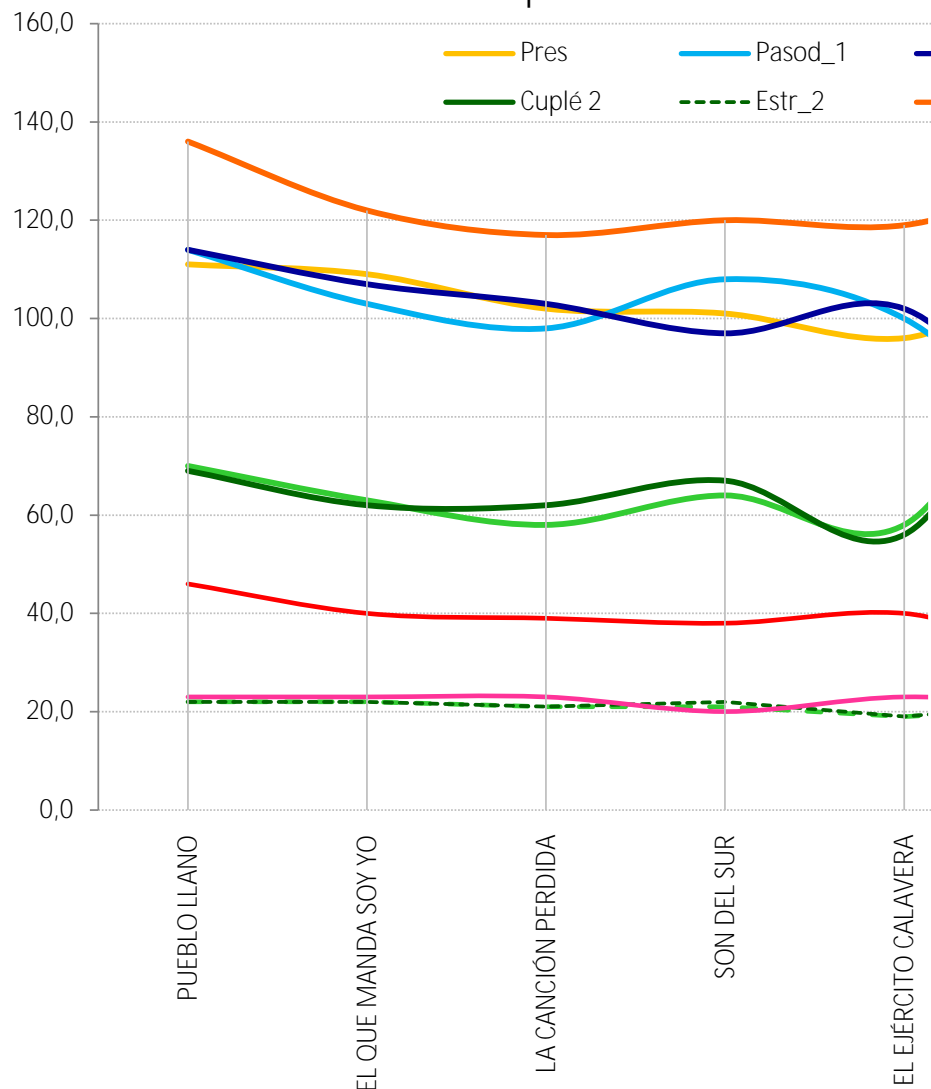
## Semifinales: COMPARSAS

## Semifinales: MURGAS o CHIRIGOTAS

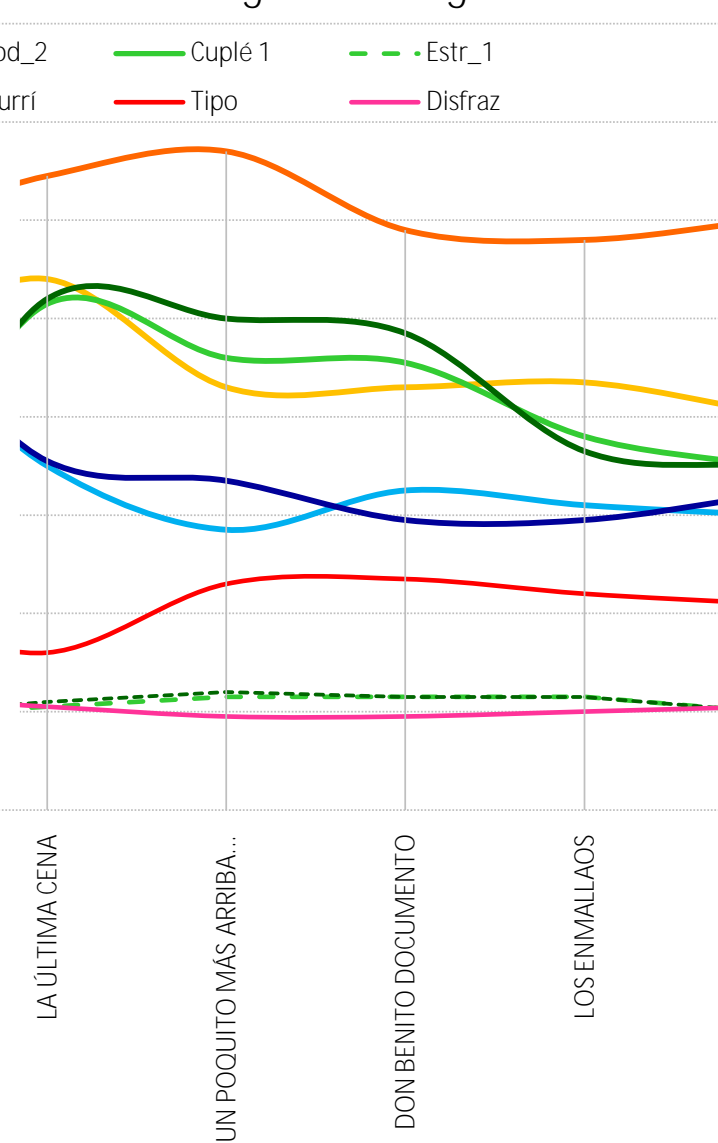


Inscripción	Agrupación	PRESENT/PAROD				PASODOBLE 1				PASODOBLE 2				CUPLA 1				EST	CUPLA 2				EST	POP / T.Libre				TIPO	DISF	TOT FASE	FASE ANTERIOR (inicio)				CLASIFICACIÓN			
		LET	Ms/ln	AFIN	↓	LET	MUS	AFIN	↓	LET	MUS	AFIN	↓	LET	MUS	AFIN	↓		LET	MUS	AFIN	↓		LET	Ms/ln	AFIN	↓				TOT	Hlva	Prov	DISF	TOT	Hlva	Prov	DISF
Comparsa	PUEBLO LLANO	38,0	36,0	37,0	111,0	39,0	37,0	38,0	114,0	39,0	37,0	38,0	114,0	24,0	23,0	23,0	70,0	22,0	23,0	23,0	23,0	69,0	22,0	45,0	45,0	46,0	136,0	46,0	23,0	727,0	1377,0			23,0	2104,0		40,0	23,0
Comparsa	EL QUE MANDA SOY YO	35,0	36,0	38,0	109,0	32,0	36,0	35,0	103,0	35,0	36,0	36,0	107,0	21,0	21,0	21,0	63,0	22,0	20,0	21,0	21,0	62,0	22,0	40,0	40,0	42,0	122,0	40,0	23,0	673,0	1322,0	28,0		23,0	1995,0	28,0	38,0	23,0
Comparsa	LA CANCIÓN PERDIDA	35,0	34,0	33,0	102,0	34,0	33,0	31,0	98,0	37,0	34,0	32,0	103,0	16,0	20,0	22,0	58,0	21,0	20,0	20,0	22,0	62,0	21,0	41,0	38,0	38,0	117,0	39,0	23,0	644,0	1337,0	37,0		23,0	1981,0	37,0		23,0
Comparsa	SON DEL SUR	32,0	33,0	36,0	101,0	37,0	35,0	36,0	108,0	29,0	34,0	34,0	97,0	20,0	22,0	22,0	64,0	21,0	22,0	22,0	23,0	67,0	22,0	41,0	38,0	41,0	120,0	38,0	20,0	658,0	1316,0			21,0	1974,0			21,0
Comparsa	EL EJÉRCITO CALAVERA	29,0	31,0	36,0	96,0	30,0	33,0	37,0	100,0	32,0	33,0	37,0	102,0	19,0	18,0	21,0	58,0	19,0	17,0	18,0	21,0	56,0	19,0	37,0	40,0	42,0	119,0	40,0	23,0	632,0	1290,0	30,0	27,0	22,0	1922,0	30,0	27,0	23,0
Coro	LA CANARINHA	35,0	35,0	35,0	105,0	27,0	32,0	31,0	90,0	26,0	32,0	31,0	89,0	19,0	20,0	20,0	59,0	20,0	16,0	20,0	20,0	56,0	20,0	40,0	44,0	40,0	124,0	41,0	24,0	628,0	1262,0		33,0	24,0	1890,0		33,0	24,0
Coro	LA CENTURIA	28,0	28,0	31,0	87,0	26,0	30,0	31,0	87,0	32,0	30,0	31,0	93,0	22,0	20,0	20,0	62,0	21,0	19,0	20,0	20,0	59,0	21,0	40,0	42,0	40,0	122,0	37,0	20,0	609,0	1110,0			20,0	1719,0			20,0
Cuarteto	OTRO AÑO A LA SOMBRA	99,0	117,0		216,0									17,0	18,0	16,0	51,0	44,0	22,0	18,0	16,0	56,0	44,0	78,0	63,0		141,0	60,0	18,0	630,0	1201,0			19,0	1831,0			19,0
Murga	LA ÚLTIMA CENA	35,0	36,0	37,0	108,0	21,0	26,0	23,0	70,0	22,0	26,0	23,0	71,0	34,0	34,0	35,0	103,0	21,0	35,0	34,0	35,0	104,0	22,0	46,0	41,0	42,0	129,0	32,0	21,0	681,0	1375,0	33,0	34,5	21,0	2056,0	33,0	34,5	21,0
Murga	O UN POQUITO MÁS ARRIBA	29,0	29,0	28,0	86,0	17,0	20,0	20,0	57,0	26,0	20,0	21,0	67,0	30,0	32,0	30,0	92,0	23,0	38,0	32,0	30,0	100,0	24,0	46,0	44,0	44,0	134,0	46,0	19,0	648,0	1307,0			19,0	1955,0			19,0
Murga	DON BENITO DOCUMENTO, A	30,0	28,0	28,0	86,0	23,0	21,0	21,0	65,0	17,0	21,0	21,0	59,0	31,0	30,0	30,0	91,0	23,0	36,0	30,0	31,0	97,0	23,0	42,0	39,0	37,0	118,0	47,0	19,0	628,0	1228,0			20,0	1856,0	31,5		20,0
Murga	LOS ENMALLAOS	28,0	29,0	30,0	87,0	21,0	21,0	20,0	62,0	17,0	21,0	21,0	59,0	25,0	25,0	26,0	76,0	23,0	22,0	25,0	26,0	73,0	23,0	40,0	39,0	37,0	116,0	44,0	20,0	583,0	1236,0	36,0		20,0	1819,0	36,0		20,0
Murga	HASTA QUE LA MUERTE NOS	29,0	25,0	27,0	81,0	21,0	21,0	18,0	60,0	24,0	21,0	19,0	64,0	22,0	25,0	23,0	70,0	20,0	22,0	25,0	23,0	70,0	20,0	42,0	40,0	38,0	120,0	42,0	21,0	568,0	1190,0			21,0	1758,0			21,0

## FINAL: Comparsas



## FINAL: Murgas o Chirigotas



# Carnaval Colombino 2018 - Acumulados por Agrupación y Fase

PREL SEMIF FINAL

